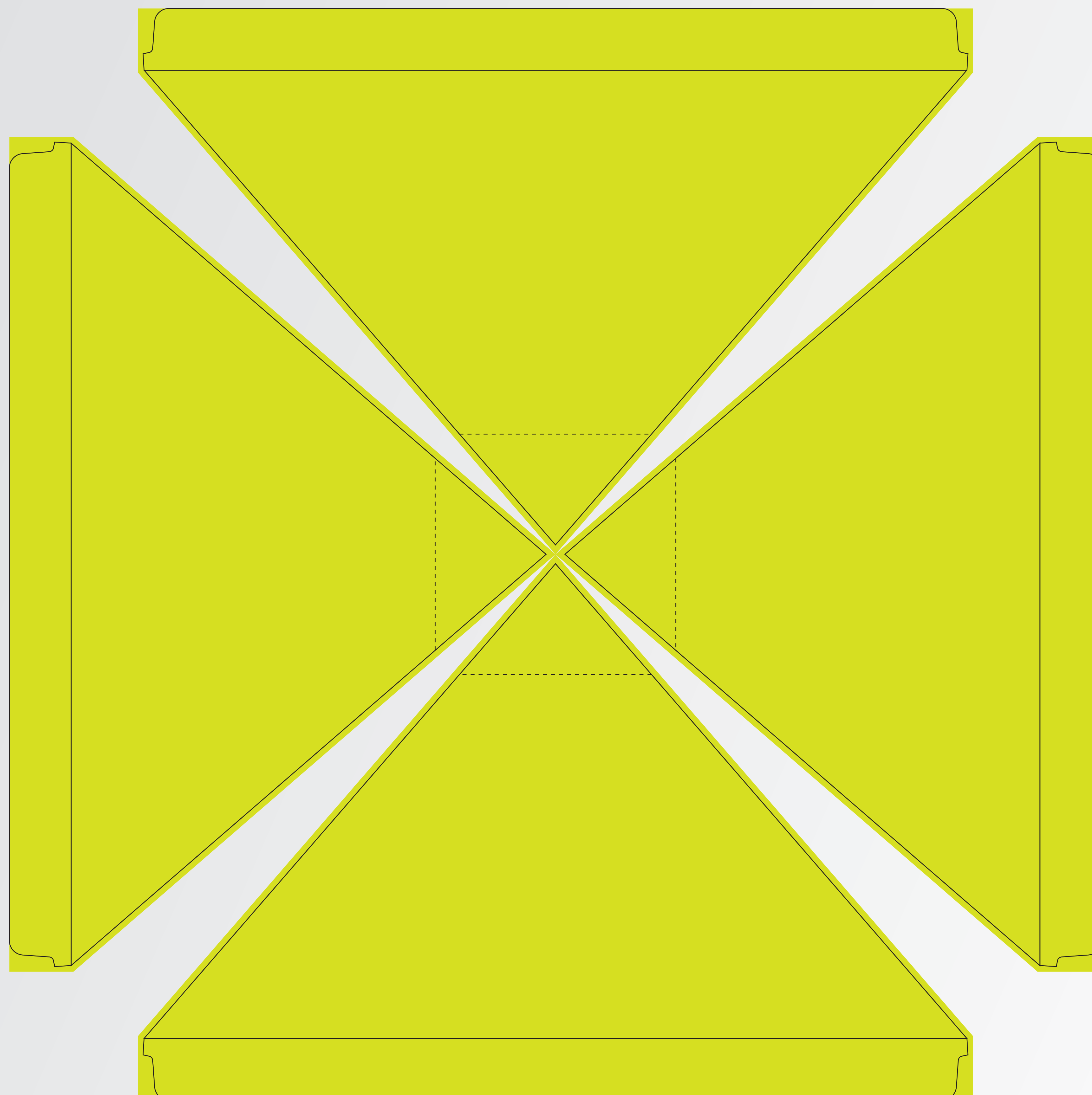
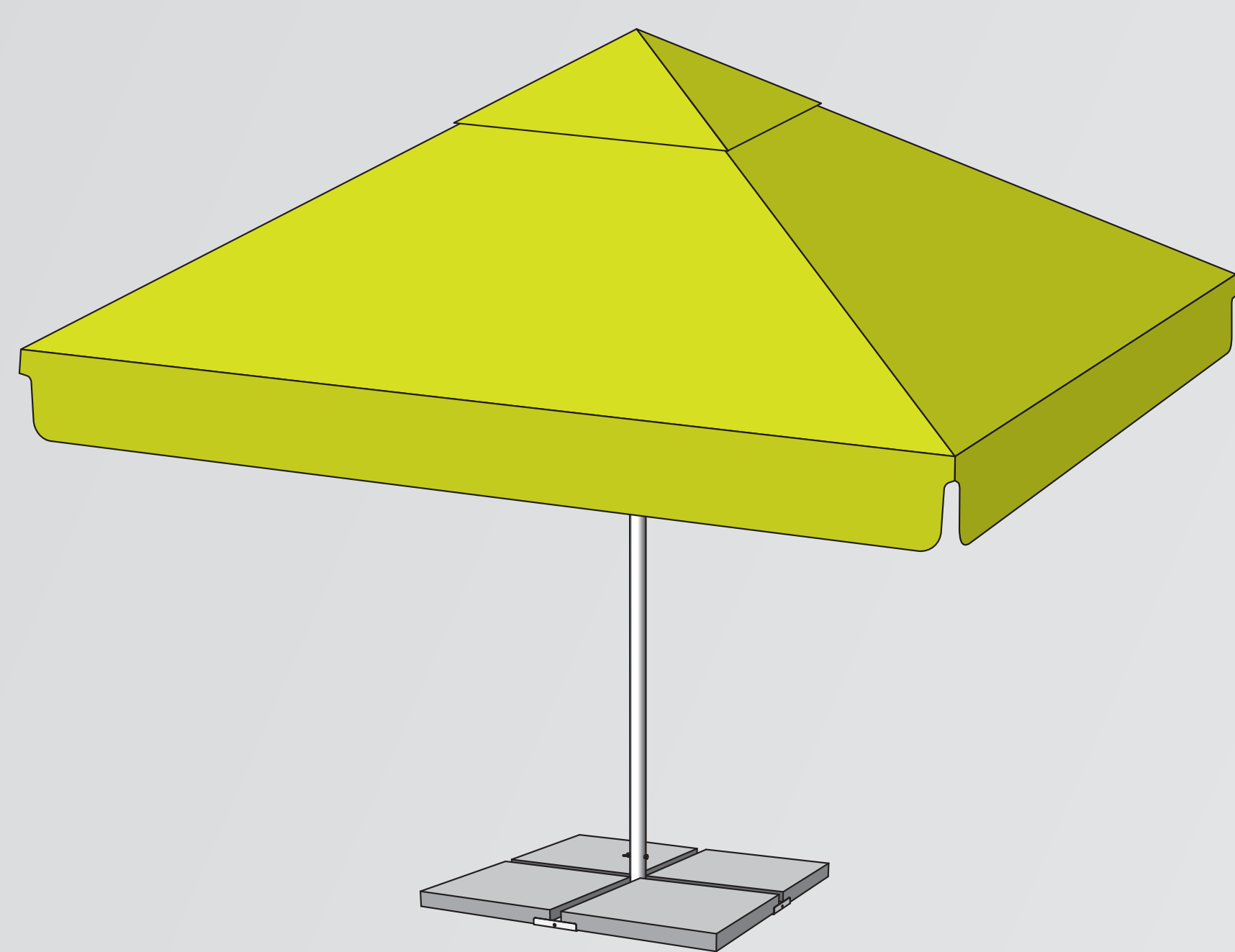


Print data requirements:

- in CMYK without colour management (without ICC profile)
- for the most accurate colours, define colour codes in "Pantone Solid Coated" range. Pantone codes not to be used for shading or transparent transitions
- convert all text data to vectors
- raster resolution of 400-720 DPI
- this template is scaled to 1:10 ratio (do not alter)
- insert your print data into this template and save without changing any settings
- alternatively export into: PDF - maintaining size of the print template and excluding any bleed marks;
AI, PSD (version CC)
CDR (version X6) formats

**PLEASE FOLLOW THE ABOVE
INSTRUCTIONS FOR SMOOTH PRINT
PROCESS OF YOUR DESIGN**

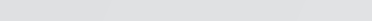
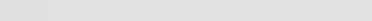
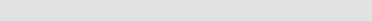


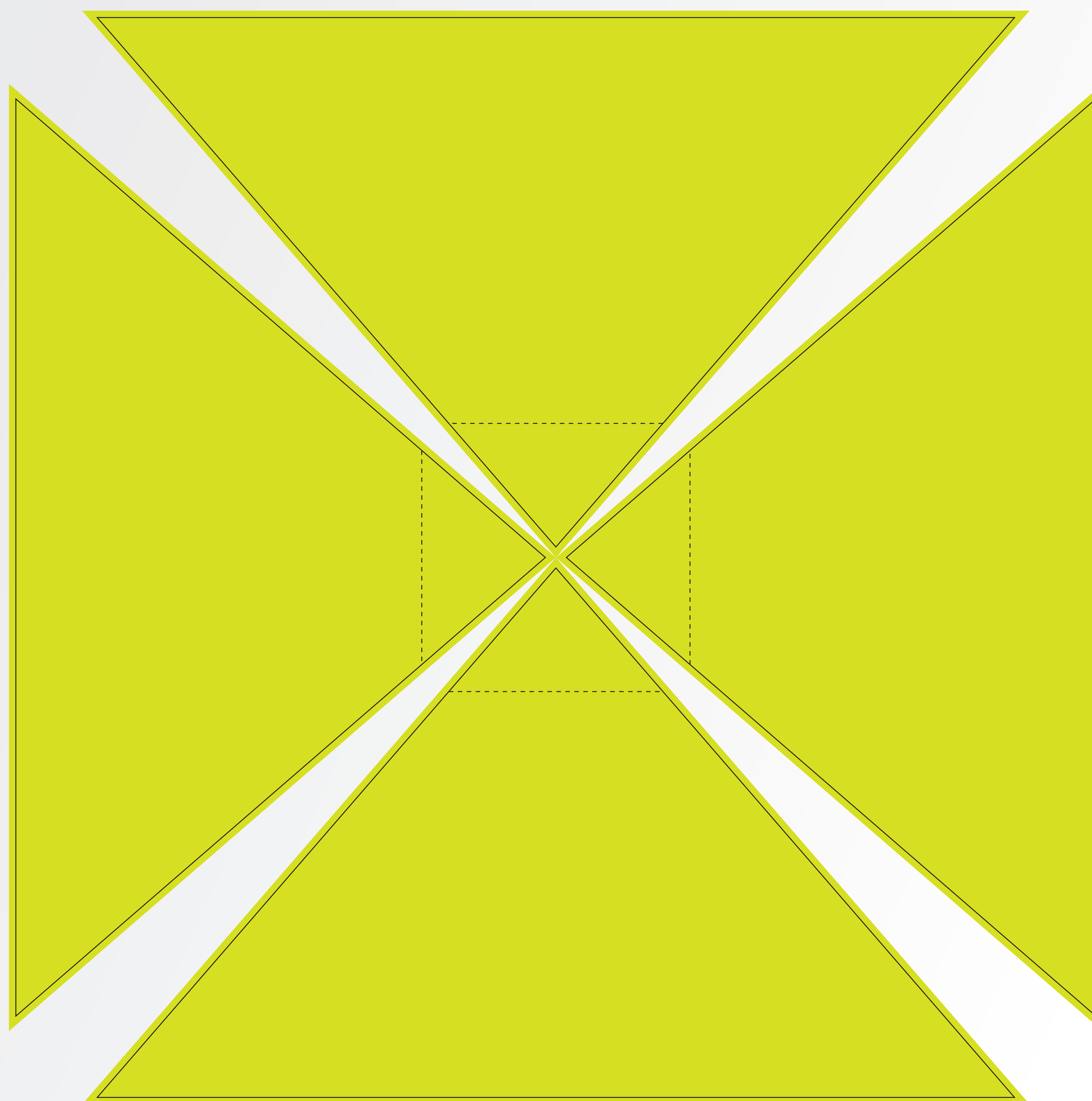
Parasol MALAGA 4x4 m

ATTENTION:

Depending on the type of fabric, coating used, and inks for higher color fastness of fabrics, the color shade may vary by up to 9%.

If you require an exact color shade, it is necessary to send a sample to which we will adjust the color.

- | | |
|---|----------------------------|
|  | size after sewing |
|  | canopy |
|  | print - fill with graphics |



parasol MALAGA 4x4 m - without valance

